

Certificate of Analysis



Client:
Polaris Peptides

Laboratory:
TrustPointe Analytics LLC
1743 142nd Ave Suite 4
Dorr, MI 49323



Verify at TrustPointeLIMS.com
Key=C5L73WAGJ6D7

Sample Information

Sample Name	TB-500 10mg, 3 vials	Client SID	POL-TB10-6	Published	2026-04-10 14:40
-------------	----------------------	------------	------------	-----------	------------------

Results

Sample IDs	SPL-3482	SPL-3482-S01	SPL-3482-S02
TM-1006 TB-500 (TB4) Assay	12.540 mg	12.810 mg	12.522 mg
TM-1006 TB-500 (TB4) ID by RT	1.00	1.00	1.00
TM-1006 TB-500 (TB4) ID by Spectral	1000	1000	1000
TM-1006 TB-500 (TB4) Purity	99.088 %	99.079 %	99.051 %
TM-1006 TB-500 (TB4) Coelution Control	999	999	999
TM-1006 TB-500 (TB4) System Suit	1.4 %RSD	1.4 %RSD	1.4 %RSD

Comments for SPL-3482

General

Purity Note: Early eluting peak present at approximately 2.8 minutes (13.064%, 13.154%, 12.986%) is consistent with Glycine (RRT and UV Spectrum) on this test method. This peak was omitted from the purity calculation.

Approvals

Created by



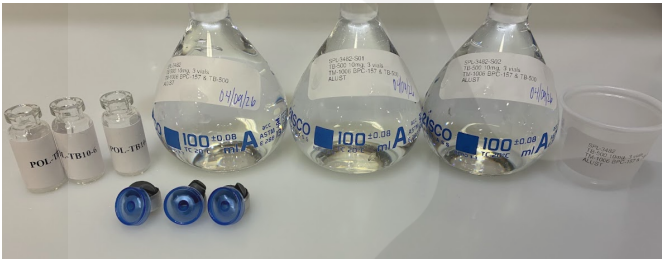
Ashlee Lust
President

Reviewed by



Joshua Lust
Managing Director

Attachments for SPL-3482



Attachment for SPL-3482
Filename: SPL-3482.png